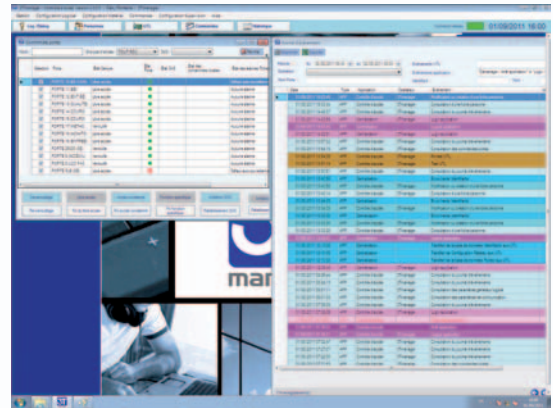


# 3T Manager

**3T Manager : Access control system - standalone or network operation**

- *Centralised access control system*
- *Able to manage between 1 and 4,000 access points*
- *Multi-purpose system (small or large applications)*
- *A single solution for different applications*



## Product description

- 3T Manager access control system can operate in a network or as a stand-alone system.
- The system can manage between 1 and 4,000 doors / directions of access.
- Capacity for up to 30,000 users, with up to 5 validity periods per user.
- The system is multi-purpose and expandable:
  - Access control,
  - Alarm management (graphic supervision),
  - Car park management,
  - Presence control.
- Compatible with all volt-free locks available in the market.
- Compatible with Dény Fontaine locks with communication capabilities.
- Bus or TCP/IP communication with the local processing unit and the computer.

## Product features

- Possibility of connecting 4 readers per local processing unit and one card with 12 inputs and 6 outputs.
- Compatible with most readers in the market.
- SQL data base.
- Client-server operation.
- Stand-alone operation in the event of break in communication with the software.
- Bus operation for locks with communication capabilities (enhanced security).
- Zone anti-passback function.
- Integrated control of door interlocks.
- 300 access groups.

### Electrical specifications

- Dimensions of local processing unit: 400 x 300 x 150 mm.
- IP55 enclosure.
- Total weight (including battery): 9.2 kg.
- Local processing unit supply: 230 VAC or 12 VDC.
- Input current: 0.38 A max (with 14 V).
- Battery capacity for 6 hours of operation with 4 readers (100-mA consumption per reader).
- 2 volt-free relay outputs in each channel card.
- 6 volt-free relay outputs in the monitoring card.

### IT hardware and software

- Requirements:
  - Intel 2GHz Dual Core (Quad Core recommended) processor or compatible processor
  - 2 GB ROM
  - 10 GB free space in hard drive
  - Graphic card for 1,280 x 1,024 or 1,440 x 900 minimum resolution
- Operating system (32 bit or 64 bit):
  - Windows XP (SP2 or SP3)
  - Windows Vista
  - Windows 7
  - Windows Server 2008

### Peripherals and accessories on request

- Electrical interlocking of all types.
- Code keypad, push-button, lead.
- Reader.
- Battery.
- Webcam.
- Badge printer.

